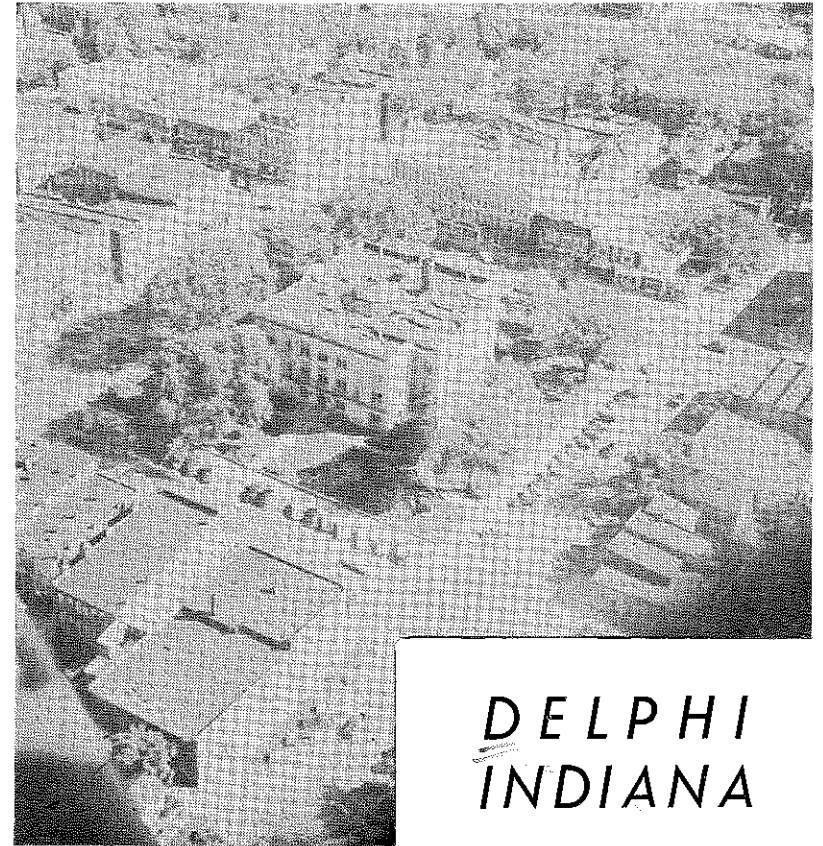


Vert. file

Indiana - Delphi - History  
32-G

# THE CITY OF



**DELPHI**  
**INDIANA**

Prepared and Distributed by  
THE DELPHI CHAMBER OF COMMERCE  
Delphi, Indiana

## **A Friendly Little Town:**

I'm living in a little city and enjoying it every day,  
For I like to do my living in a friendly sort of way  
I'm never tired of meeting the friends I've known  
for years

And I get the most from living when I'm sharing  
smiles and tears.

Life without the friendly greeting of the folks  
I know so well

Would be a lonely kind of life, just an empty  
sort of shell;

About all that I'm asking at the closing of the day

Is a chance to do my living in a friendly  
sort of way.

— Author Unknown

## ***Location***

DELPHI offers the prospective resident the means for abundant living and progressive business methods. Within its modern and gracious reaches are to be found a variety of facilities ideally suited for new growth based on a solid foundation of 130 years of existence. Its citizens are mindful of the need for both advancement and preservation of progress already accomplished.

Located 70 miles north of Indianapolis, 130 miles south of Chicago, in Deer Creek Township, Carroll county, Ind., Delphi is picturesquely situated on the banks of the poet Riley's famous "Deer Crick".

The county seat of Carroll county, Delphi is the hub of county activity, with a population of more than 3,000 persons.

## ***Transportation***

Public transportation to and from Delphi is notable for its convenience. Easily accessible are rail transportation, bus service, air service, motor freight and a network of well-routed highways.

### ***Rail Service***

Rail transportation in the Delphi radius is provided by both the Monon and Wabash lines.

The Monon connections, reaching the cross-country links of both Indianapolis and Chicago, offer fast, comfortable and convenient schedules.

#### **Monon Schedule: —**

To Chicago .....	8:08 a. m. (CST)
	5:46 p. m. (CST)
To Indianapolis .....	10:27 a. m. (CST)
	7:55 p. m. (CST)

#### **Wabash Schedule: —**

(On main line between Detroit and St. Louis)

To Detroit ..... 2:30 p. m. (CST)

To St. Louis (mail train only) daily

Pennsylvania connections, fanning south and east are located at Logansport, a distance of 20 miles from Delphi.

## ***Transportation (cont.)***

### ***Bus Service***

The Indiana Motor Bus Company provides four direction connections with both passenger and package service.

#### **BUS SCHEDULE: —**

West bound departures .....	12:40 p. m.
	6:50 p. m.
East bound departures .....	9:00 a. m.
	5:45 p. m.

### ***Air Service***

Regular and feeder flights making cross-country connections are available at Lafayette only 17 miles west from the Delphi limits. For further convenience, charter flights and air ambulance services also are offered at Lafayette.

### ***Motor Freight Service***

Daily service on a speedy overnight basis is available from Chicago and Indianapolis. No less than three motor freight companies make daily stops in Delphi (Kain, Courier and Turner).

## Utilities

Reliable and efficient utility service is readily available for both home and industry. Rural as well as urban service for a sizeable area is headquartered at Delphi with resulting advantages in skilled installation and maintenance service.

### Electrical Power

Supplied by Public Service Company of Indiana (urban) Carroll County Rural Electric Membership Corporation. (rural)

Power transmission lines from three different sources minimize the dangers of prolonged service interruptions.

#### Rate Schedule for R.E.M.C. (rural): —

first 30 KWH .....	7½c
next 30 KWH .....	5c
next 170 KWH .....	3c
over 230 KWH .....	2c

#### Rate Schedule For Public Service Company: —

##### Residential:

first 50 KWH .....	5½c
next 50 KWH .....	4c
next 100 KWH .....	2½c
over 200 KWH .....	2c

##### General Service Rate:

first 150 KWH .....	5c
next 350 KWH .....	4.2c
next 1,000 KWH .....	3.2c
next 1,000 KWH .....	2.7c
excess over 2,500 KWH .....	2.1c

(Steps in rating listed above vary according to load, options and installations.)

## Utilities (cont.)

### Water Power

The water plant is municipally owned with industrial capabilities. Quality-wise, the water has a minute trace of iron and has 17 grains of hardness.

#### Rate Schedule:

first 10,000 gallons .....	40c per thousand
next 10,000 gallons .....	30c per thousand
next 25,000 gallons .....	25c per thousand
next 50,000 gallons .....	20c per thousand
next 50,000 gallons .....	15c per thousand
to 500,000 gallons .....	10c per thousand
above .....	8c per thousand

### Gas Service

Delphi is served with natural gas by the Central States Gas Company.

#### Rate Schedule:

first 1,000 cu. ft. ....	25c
next 1,000 cu. ft. ....	18c
next 1,000 cu. ft. ....	15.5c
over 3,000 cu. ft. ....	15c

### Telephone Service

The Carroll Telephone Company provides 24-hour service for Delphi and the immediate surrounding territory. Newly installed long distance dial connections in nearby Logansport and Lafayette assist the prompt local service.

## Local Industry

Well established local manufacturing plants provide a good foundation of excellent management-labor relations. A high grade of co-operation exists among those concerned with industry and the proprietors of businesses found in the up-to-date shopping district. Civic responsibility and good business methods are employed by the local business leaders to make commerce in Delphi lucrative.

### DELPHI IS HOME BASE FOR:

Globe Valve Corp., manufacturing plumbing fixtures

Gerber Industries, manufacturing shower cabinets, etc.

Delphi Products Co., *Q.A. Smith Co.* manufacturing livestock scales, chutes, etc.

Peters Manufacturing Co., manufacturing occasional furniture

Delphi Body Works, manufacturing truck bodies, utility trailers, etc.

Hoosier Call & Decoy Co., manufacturing crow and game calls

Hoosier Products Co., manufacturing livestock drinking fountains

Green Acres Soil Service, Inc., manufacturing fertilizer

Stuntz-Yeoman Co., operating lime quarry

Brim Company, manufacturing Ready-Mix cement

*Delta Products*

Of the above listed concerns, only one, the Delphi Body Works, employing forty persons, is a union shop.

## Local Industry (cont.)

The union is the Allied Industries, affiliated with the AFL-CIO. Starting pay is \$1.40 per hour with .05 increase after thirty and sixty days and automatic increases of .05 each six months thereafter.

Ample building sites are available for the erection of new buildings. These sites are adjoining existing streets, with sewage and water laid adjacent. Vital to some industries, railroad sidings are available if desired.

A planning commission has been established for the purpose of zoning industrial, business and residential areas.

Delphi has a stable labor population and several nearby smaller communities can feed laborers here. Some who live here but work in other towns could be attracted to work here. The town is capable of supplying homes for additional families.

Delphi is willing to co-operate and assist any new industry and those desiring to build homes here.

## ***Tax Rates***

Delphi has a lower than average tax rate with an anticipated reduction in the state rate for those taxes payable in 1959. Funds are wisely administered with good return in services and facilities assured the taxpayer.

### **TAX RATE SCHEDULE:**

(for 1957, payable in 1958)

State .....	15c
County .....	65c
Township .....	3.46
(for township residents) ....	3.96
Delphi City .....	1.99
(for Delphi residents) .....	6.26

## ***Communications***

Two weekly newspapers with alert news coverage, The Delphi Journal and The Delphi Citizen, are printed in Delphi. As advertising media, they offer above average facilities.

Radio and T-V stations are located within a 20-mile radius.

## ***Housing***

Rental properties are on the market in Delphi, with the number available fluctuating. Supplementary housing is to be found along the Tippecanoe River and Shafer and Freeman Lakes. All are within easy driving distance from the Delphi area. Here, are both summer and year-around homes which appeal to many workers because of their scenic location.

Facilities are ready for home construction in Delphi. Electricity, water, sewers, etc. are ready for installation in new homes. Pre-fabricated construction has been successfully employed in the area for quick and satisfactory housing. Local contractors are equipped to give prompt service.

## ***Schools***

The Delphi school system engages the services of 41 qualified teachers as well as three administrators. Progress is evident in the extensive addition to the present high school which at this point is approaching the construction stage. Attention is being given to the need for further growth in the school plants.

Enrollment in the schools is at present approximately 950 students in the public schools with an additional 40 pupils in the parochial school.

There are two public grade schools, divergently situated, as well as a centrally located high school. The parochial school, too, is well-located.

School participation in sports and other extra-curricular activities is rated high.

## Churches

Delphi has nine churches with active congregations. Church programs are without exception, well-planned and readily offered to the new member.

### CHURCHES LOCATED IN DELPHI:

Baptist	Lutheran
Catholic	Methodist
Christian	Pilgrim Holiness
Episcopal	Presbyterian

Church of the Brethren

*Church of Christ*

## Medical Facilities

Five physicians practice their profession in Delphi. Offices and equipment maintained by all are abreast of modern medical advancements. Six hospitals are located within a 21-mile radius. Ambulance service is offered in Delphi by both the Eikenberry and Jackson funeral homes. There are three practicing dentists located within Delphi proper, in addition to an optometrist.

## Recreational Facilities

Delphi offers a wide variety of recreational opportunities for both the young and the young at heart. In the heart of a lake-river region, it affords fine terrain for hunting and fishing. College athletic events and important cultural and theatrical programs are enjoyed by many Delphi residents at nearby Purdue University.

Delphi, itself, has an up-to-date movie house, a bowling alley, a nine-hole golf course in conjunction with the local Country Club (open to non-members for the usual greens' fees) and two city parks with a third under development. The parks invite picnickers, having shelter houses, water, toilet facilities as well as baseball diamonds and a football field. A new \$6,500.00 Scout cabin was recently built in one of the park areas by community effort.

Delphi has its own "Little League" baseball park and was chosen in 1957 as the host park for the area tournament.

Delphi follows sports events with enthusiasm with the high school teams being spurred on each season with encouraging local interest.

## Civic Organizations

Adina Rebekah	Knights of Columbus
American Legion	Jaycees
Business and Professional Women	Little League
Chamber of Commerce	Lions
D. A. R.	Masonic Order
Eagles	Moose Lodge
Federation of Woman's Clubs	Odd Fellows
Eastern Star	Rainbow For Girls
	Rotary
	Scouts (boys and girls)
	Three Sororities

## ***Fire and Police Protection***

The Delphi fire department is organized as a ten-man crew working under the direction of a fire chief. The department has two motorized 750-gallon-per-minute pumpers and a resuscitator.

The Delphi police department has a three-man staff working with the police chief. A two-way radio equipped police car patrols the city. Delphi also is the headquarters for the Carroll county sheriff's department.

## ***Other Facilities***

Located in Delphi is the Union Bank & Trust Company for banking convenience.

A modern public library offers a wealth of reading material in its stacks, of both fiction and reference types.

There are modern stores in Delphi which attract customers from a great area because of the large stock they carry.

The people of Delphi are friendly and welcome newcomers to the city.



PRINTED BY THE DELPHI JOURNAL  
DELPHI, INDIANA