

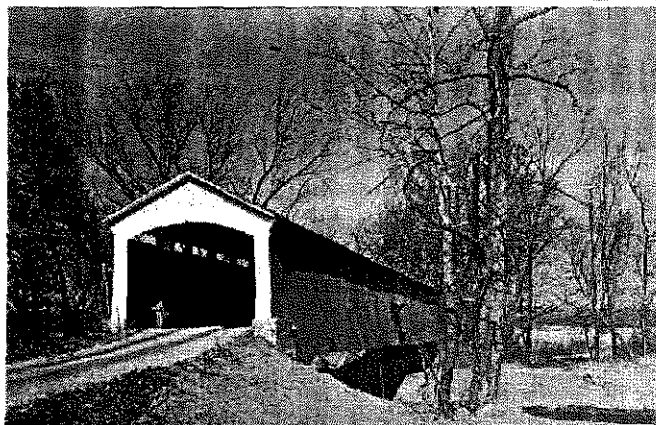
Covered Bridges of the Past

We continue our trip of covered bridges of the past. Each issue we will feature many of the covered bridges that no longer exist and ones that are still standing. This issue we take a look at three more covered bridges in our great state of Indiana.



The Jackson Covered Bridge is located in Annapolis, Indiana, Parke County. It is located 2 ½ miles northwest of town and is also known as the Rockport Covered Bridge. It is a single span Double Burr Arch Truss structure and is 207 feet long by 16 feet wide and 18 feet high. Joseph J. Daniel's built it in 1861.

The Adams Mill Covered Bridge sat northeast of Cutler, Indiana in Carroll County. It sat over the Wildcat Creek and was built by the Wheelock Bridge Company in 1878. It was of the Howe Arch style and was 149 foot in length.



The Conley's Ford Covered Bridge, which sits 2 miles southwest of Mansfield, Indiana, is located in Parke County. It crosses Big Raccoon Creek and is a single span Burr Arch Truss structure. It is 192 feet long by 16 feet wide and 13 feet high. J.P. Van Fossen built this bridge in 1907.